



# Homed:In

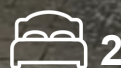
18 Station Road, Southwater, RH13 9HQ



## Sycamore Rise

Barns Green, Horsham, RH13 0AU

Price Guide £385,000



2



1



2





# Sycamore Rise



## Description

A handsome modern home with garage, set in a quiet countryside location.

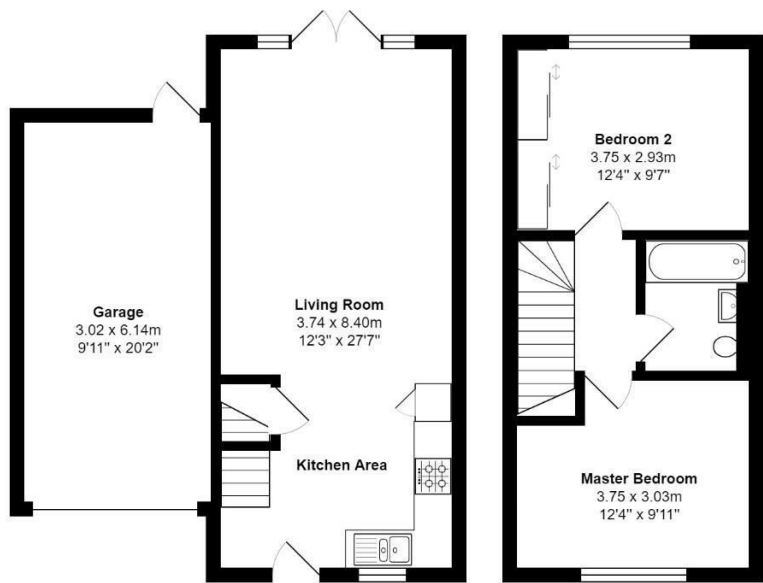
- Excellent 2 Double Bedroom Home
- In-keeping Interior Design
- Excellent Extension Potential STP
- Secluded Sunny Garden with Water Feature
- \*VIDEO TOUR AT OUR WEBSITE\*
- DRIVEWAY FOR 2 CARS
- Modern Open-Plan Arrangement
- Scenic and Quiet Cul de Sac Location
- Secure your Viewing Today







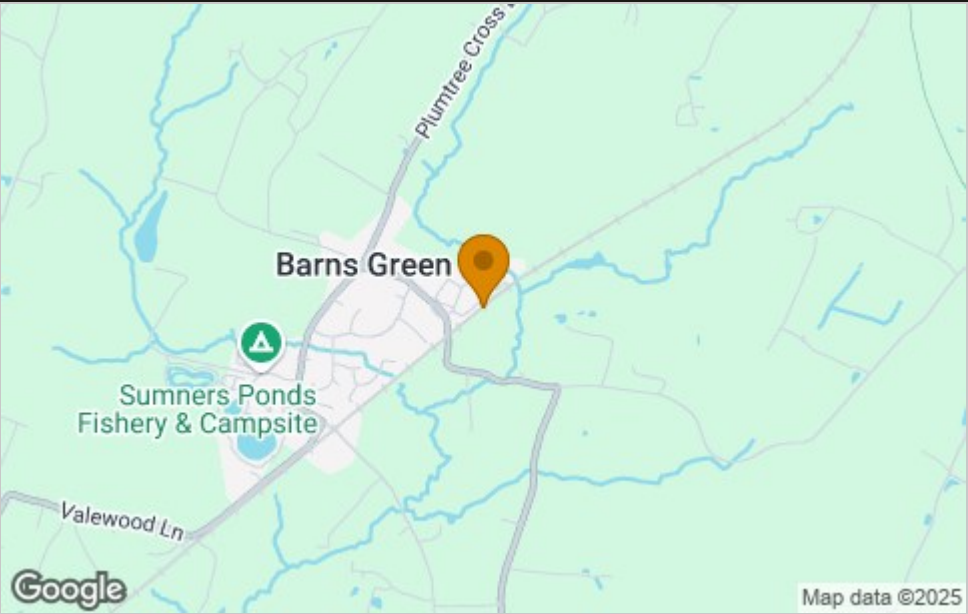
Floor Plan



Total Area: 82.4 m² ... 887 ft²

All measurements are approximate and for display purposes only.  
Copyright 2024. All rights reserved

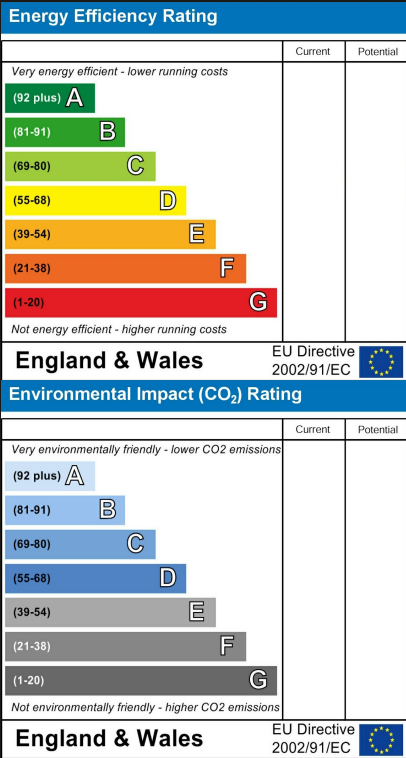
Area Map



Viewing

Please contact our Horsham Office  
on 01403 597595 if you wish to arrange a viewing appointment for this property  
or require further information.

Energy Efficiency Graph



These particulars, whilst believed to be accurate are set out as a general outline only for guidance and do not constitute any part of an offer or contract. Intending purchasers should not rely on them as statements of representation of fact, but must satisfy themselves by inspection or otherwise as to their accuracy. No person in this firms employment has the authority to make or give any representation or warranty in respect of the property.

To **GET A FREE VALUATION** Call us on: **01403 597595**  
or email us at: **info@homedin.co.uk**